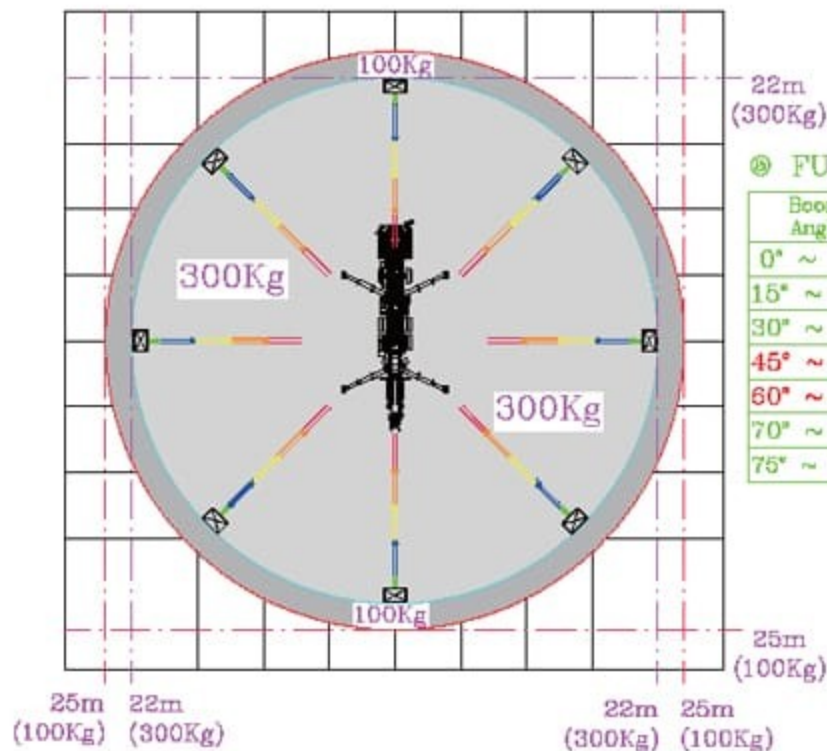


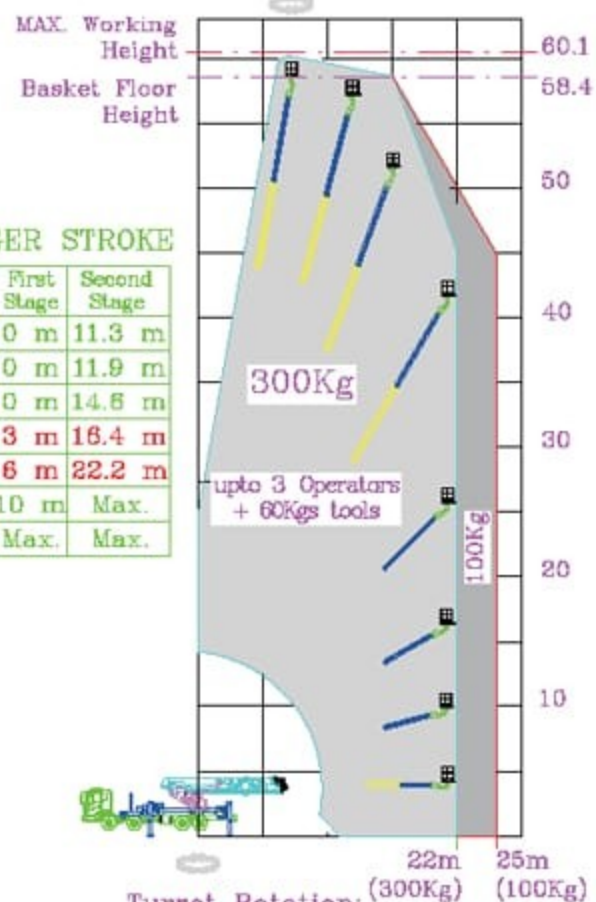
**Jinwoo600 Work Area Diagram  
mounted on 25Tons GVW vehicle**



**NOTE:**

- MUST WORK AT LEAST 5M AWAY FROM HIGH TENSION ELECTRICITY WIRES.
- ♦ Above datas may vary booz. of vehicle type and working environment conditions.

**Platform Rotation:**  
360° Continuous in both directions



**Turret Rotation:**  
360° Continuous in both directions.

**◎ FULL OUTRIGGER STROKE**

Boom Angle	Boom Length	First Stage	Second Stage
0° ~ 15°	21.3 m	0 m	11.3 m
15° ~ 30°	21.9 m	0 m	11.9 m
30° ~ 45°	24.6 m	0 m	14.6 m
45° ~ 60°	29.4 m	3 m	16.4 m
60° ~ 70°	38.2 m	6 m	22.2 m
70° ~ 75°	48.5 m	10 m	Max.
75° ~ Max	Max.	Max.	Max.